



Illinois Solar for All

Approved Vendor Photo Guide

Updated April 2024

Introduction

This guide provides Approved Vendors with visual examples of photos that exemplify the standards expected from photo documentation provided as part of the Part I and Part II project approval processes. Approved Vendor Managers review photos to understand existing site conditions before the photovoltaic (PV) system is installed during the Part I application, and to see installed equipment post-installation as part of the Part II application. Since the Approved Vendor Manager is not present at the site assessment or system installation, site photos help demonstrate roof conditions and orientation, electrical system condition, shading impacts, available area, and to verify installed equipment. There are times when photos outside of those listed within this guide to verify Part II Submitted site plan or one line.

Clear, well-lit, and composed photos can expedite the application review process, while blurry, incomplete photo sets will result in requests for additional photos, prolonging the review process. Aerial photos are helpful as they provide a panoramic view, allowing the reviewer to see the proposed site location and the surrounding area.

Close-up photos of components and their labeling should be legible. Take time to compose a quality image and review it onsite as this reduces the need to retake photos. Please reach out to your Vendor Manager with any questions about ILSFA project photo requirements.



Table of Contents

Part I – Site Assessment

- Site Suitability (4-9)
 - Roof Condition (5)
 - Roof Components (6)
 - Ground Mount Site (7)
 - Electrical (8)
 - Work Area (9)
- Shading (10)

Part II – Site Inspection

- Inverter (12-13)
- Metering (14)
- Modules (15)
- General Electrical (16)
- Safety Labeling (17)
- Other Electronics (18)
- Interconnection (19)
- Pitched/Flat Roof (20)
- Ground Mount (21)
- General Structural (21)
- Shading (22)



Part I

Site Assessment



Part I Site Suitability: Roof Condition

Pitched Roof



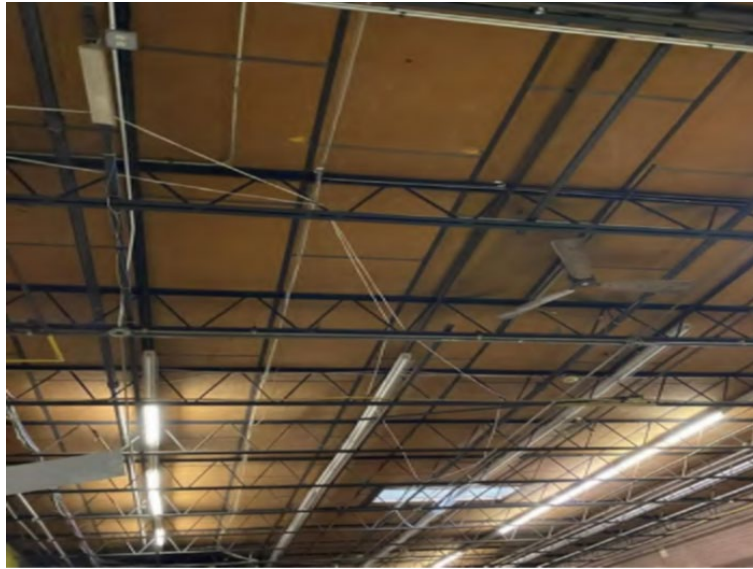
Flat Roof



As part of the Site Suitability submission, photos are to be submitted of the overall roof condition. As shown here, Aerial shots of the location are ideal, capturing the entirety of the proposed location. Should you be unable to submit aerial photos, submit photos showing all sites.



Part I Site Suitability: Interior Roof Components



Photos showing interior roof components are submitted to ensure the integrity of the roof prior to installation. See the Structural Assessment section of the Site Suitability Guidelines for more information regarding these photos.



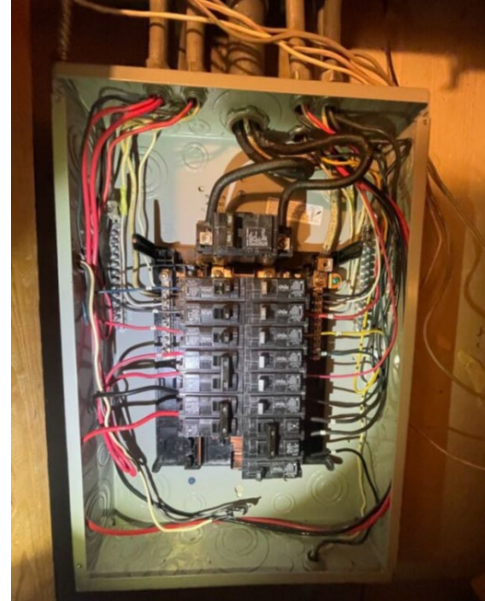
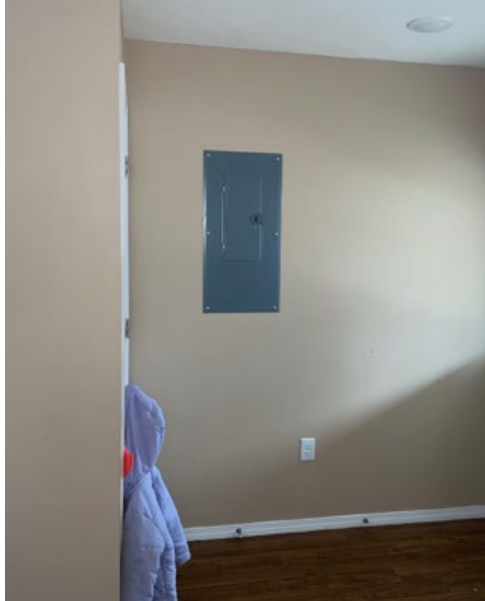
Part I Site Suitability: Ground Condition



For Ground Mount systems, submit photos showing the conditions of the site to be utilized for ground mount installation. See the Ground–Mount Siting Assessment section of the Site Suitability for more details.



Part I Site Suitability: Electrical System



Photos showing the condition of the electrical panel at a Residential Solar (Small) location and Non-Profit Facility. It is important to show multiple photos. One with the Main Service Panel cover on and visible and another with the cover removed exposing the service and branch wiring. See the Electrical Assessment section of the Site Suitability Guidelines.



Part I Site Suitability: Space and Accessibility



Area Clear of Obstruction: Photos showing the condition of the area surrounding the electrical panels. It is important to show multiple photos. Additional work to ensure a clear work area should be noted as part of the site's suitability.



Part I Site Suitability: Shading



Photo showing proposed array location for a single-family residence. This one aerial photo would satisfy requirements when multiple arrays are placed on the different directional facing pitches of the roof. However, photos taken from 6' above the roof will not capture all the proposed arrays, in which case multiple photos will need to be presented.



Photo showing potential obstructions. This photo attempts to show the impact of the two large trees to the south of the array location. This shading can influence REC quantity and incentive amounts and could justify alternative design methods.



Photo showing potential obstructions to the proposed array in the HVAC units on the roof of this building. These items are verified in the project's submitted System Design.



Photo showing proposed array location for a Nonprofit project. While not an aerial photo, this, too, would satisfy requirements as the multiple arrays are being installed on the two roof faces shown here.

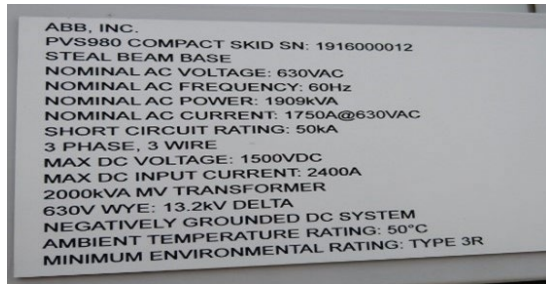


Part II

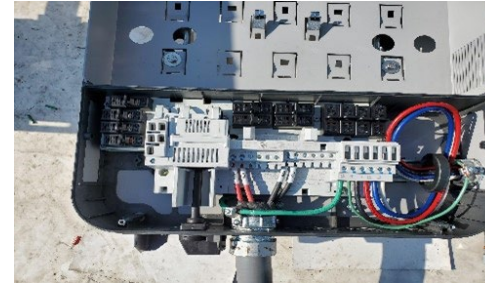
Site Inspection



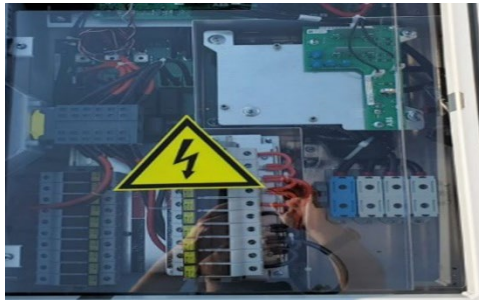
Part II Photos: Inverter - DC Inverters and Combiner Boxes



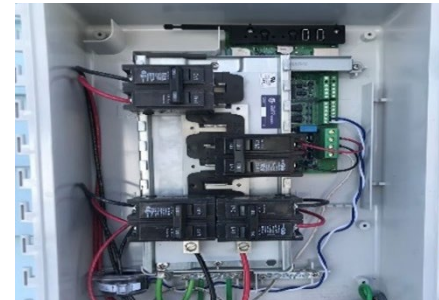
String Inverter: Photo showing String Inverter information label with the model number shown.



DC Disconnect: Photo showing wiring inside of DC Disconnect enclosure (within inverter or isolated).



DC Combiner Box: Photo showing wiring inside of DC Combiner Box.



AC Combiner Box: Photo showing wiring inside of AC Combiner Box.



Part II Photos: Inverter - Panel Level Devices



Panel level Devices: Photos showing panel-level micro-inverter, optimizer, or Rapid Shut Down device label with model number shown. Multiple photos may be necessary to capture both the information label and model number as depicted for the Enphase device.



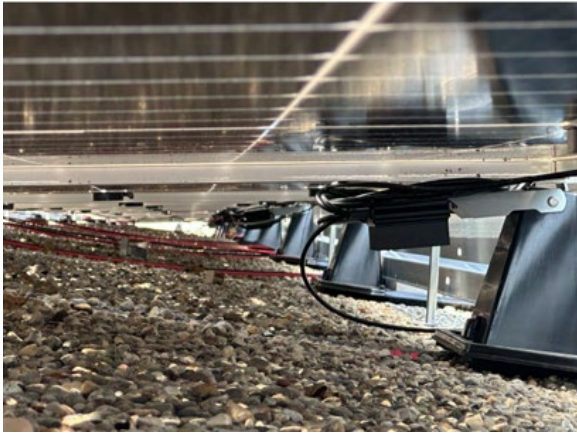
Part II Photos: Modules



Project: Photo showing installed modules. Aerial photos will satisfy requirements when placed on a building with multiple arrays placed on different directional facing pitches. When aerial photos are not available a photo of each array must be submitted.

Module Information: Photo must show module label with model number matching submitted final as-built, single line and Part II Submitted.

Part II Photos: General Electrical - Grounding and Exposed Wire Management



Grounding and Exposed Wire Management: Photo showing panel frame is grounded and bonded. Photos submitted demonstrating proper wiring securing methods. An interior and exterior photo of installed junction boxes is also needed if installed.



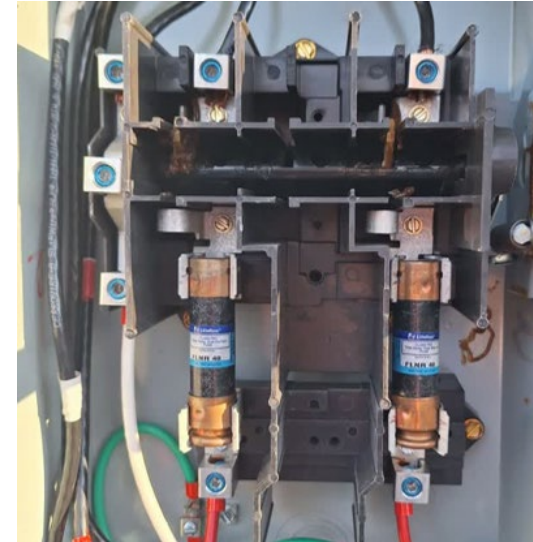
Part II Photos: General Electrical – Safety Labeling



Labeling: Photos showing clear and accurate labeling is present as necessary on inverters, disconnects, conduit, Main Service Panel, and other electronics. As part of the review, additional labeling photos may be requested as part of the system review.



Part II Photos: Other Electronics - Disconnects, Fuses

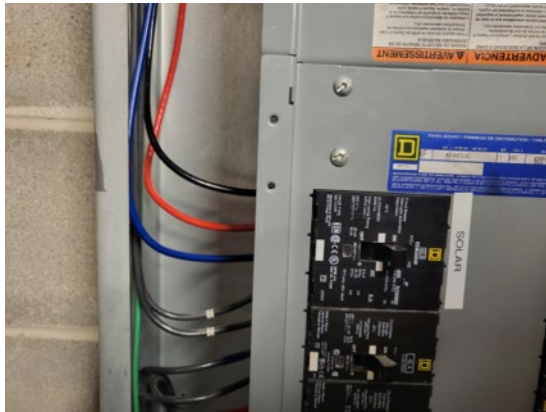


Fuses and Disconnect Interior: Vendor submitted photos showing the interior and exterior of the disconnect with clear photos of fuse ratings and labeling on the exterior. For all projects, a photo may be requested for installed equipment such as transformers, Non-integrated Rapid Shut Down Devices, or other electronics shown on the Single Line Diagram.



Part II Photos: Point of Interconnection

Point of Interconnection: A photo must be submitted showing the method of interconnection.



Load Side connection: photo showing the wiring connection of the PV system through a UL listed and properly rated back-fed breaker in the main service panel.



Supply Side: a photo showing a properly rated, UL listed tap was performed for the connection to the switch board or main service panel.



Part II Photos: Mounting and General Structure – Roof Mounted Solar



Mounting System Anchoring: Photo showing flashing techniques utilized for applicable flat roof projects.



Tilt Angle: Photo showing the angle utilized for applicable flat roof projects. This angle should be consistent with all submitted project design documentation.



Mounting System Anchoring: Photo showing the flashing techniques utilized for applicable angled roof projects.



Mounting System Anchoring: Before modules are placed a photo showing the mounting systems anchoring technique utilized for applicable roof mounted projects must be captured.



Part II Photos: Mounting and General Structure – Mounting Structure and Tilt



Photo showing the angle utilized for applicable ground mounted project. This angle should be consistent with all submitted project design documentation.



Mounting System Anchoring: Before modules are placed, a photo showing the ground penetration techniques utilized for applicable ground mounted projects must be captured.



Part II Photos: Shading



Obstructed Array Sections: Submit photos if shading is present of obstructions such as trees, chimneys, HVAC or other such items. If no shading is present, no additional photos are needed outside of general structure photos.

